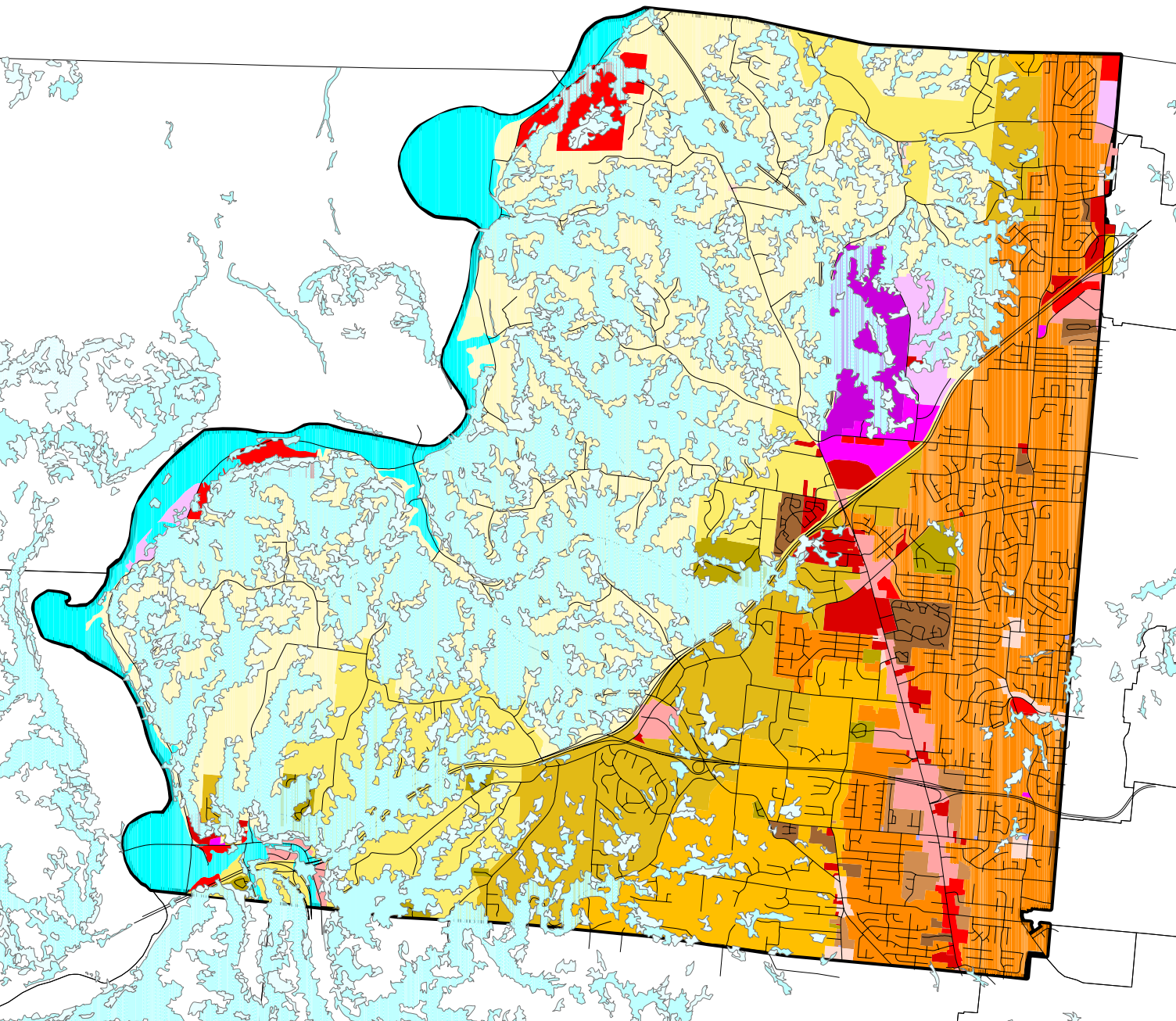


# Colerain Township Zoning



## Zoning Districts

- B-1 Neighborhood Business
- B-2 General Business
- B-3 Commerce
- I-1 Industrial
- O-1 Office
- PD-B Planned Business
- PD-I Planned Industrial
- PD-R Planned Residential
- PD-R\* Planned Residential\*
- R-2 Estate Residential
- R-3 Suburban-Low Resid.
- R-4 Suburban-Med. Resid.
- R-5 Suburban-High Resid.
- R-6 Urban Residential
- R-7 Multi-Family Residential
- RF Riverfront
- SWD Solid Waste

## HDO Hillside Development Overlay

- 20 - 25
- 25 - 30

Colerain Township  
Planning & Zoning  
June 2009

